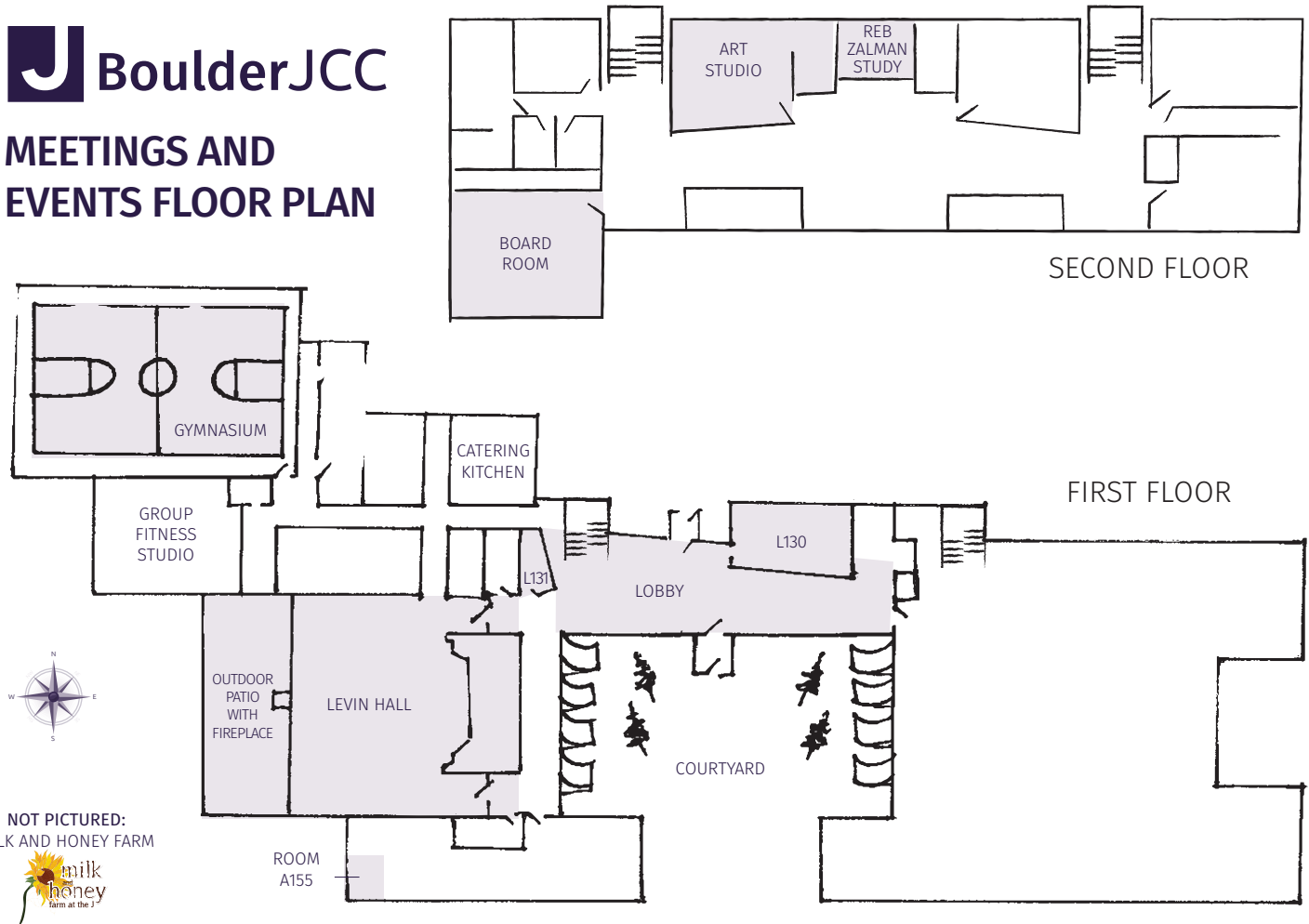




# MEETINGS AND EVENTS FLOOR PLAN



NOT PICTURED:  
MILK AND HONEY FARM



Room Name	Square Footage	Banquet	Cocktail	Theater	Classroom	Conference	Special Features*	Audio-Visual*	Rates M-F** 7:30 am-5:30 pm
Levin Hall	4800	50-300	550	512	220	50-350	Flatiron views, up lighting, stage, outdoor patio with fireplace	Projector with 20' screen, wall speakers with 6 channel surround sound, microphones (cordless and lapel)	Variable
Room L130	930	48	85	70	42	36	Built-in credenza for food or other supplies, hot/cold water dispenser	Ceiling-mounted projector with 11' screen, in-ceiling speakers	\$50-\$75/hr
Room L131	180	8	10	8	-	8	Sink	See available amenities	\$25/hr
Board Room	750	-	50	40	36	30	Flatiron views	65" TV on wall	\$50-\$75/hr
Room A155	165	-	-	-	-	High-top table with up to 10 chairs	Flatiron views	55" TV on wall	\$40-\$60/hr
Gymnasium	5620	350	-	-	-	-	Room divider for two semi-private events, hoops lift to ceiling	In-ceiling speakers with SONOS system	\$85-\$150/hr***
Reb Zalman Study	175	-	-	-	-	6	Food/drink not allowed	See available amenities	\$25/hr
Art Studio	480	-	-	-	24	18	Sink	See available amenities	Variable
Lobby	2500	100	50-300+	220	-	-	Fireplace	Wall speakers	\$40-150/hr

\*Amenities available in all rooms by request: conference phone, easels, white board and markers, microphone, portable AV options, podium

\*\*For early morning, evening, and weekend rates, please contact rentals@boulderjcc.org

\*\*\*Listed rate is for sports only; Please contact for event space rates.

Configuration Style	Definition	Most Common Use
Banquet	Round tables, chairs all around	Meals, presentations, meetings, large events
Cocktail	Cocktail tables, no or few chairs	Mingling, mostly standing room only
Theater	Chairs only, facing same direction	Lectures, meetings, films, concerts
Classroom	Tables and chairs, facing same direction	Longer meetings, lectures, note taking
Conference	Tables and chairs, facing each other	U-shaped configuration for board meetings, small group discussions, high collaboration